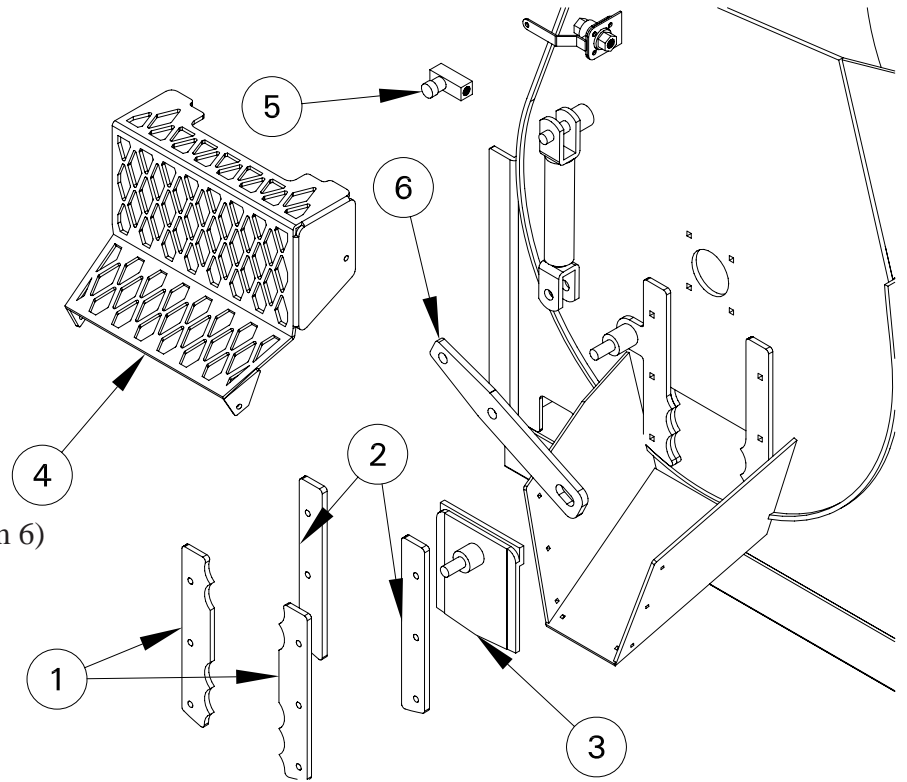


MMH-TSB-002 Mobile Mud Hog® Slide Gate Update

Many Mobile Mud Hog® have experienced troubles with the gate actuation. The gate has intermittent jamming that causes the operator to actuate the control several times before the gate will actuate. The included update kit has been issued to remedy the problem.

Included:

- 2 Slide Gate Cover (Item 1)
- 2 Slide Gate Shim (Item 2)
- 1 Slide Gate (Item 3)
- 1 Slide Gate Actuation Arm (Item 6)
- 6 3/8" x 1 3/4" Carriage Bolt
- 6 3/8" Nylon Lock Nut
- 3 5/16" x 1" Bolt
- 3 5/16" Nylon Lock Nut
- 3 5/16" Flat Washer



Instructions

- 1) Remove existing Slide Gate Guard (Item 4), Slide Gate Covers (Item 1), Slide Gate Shims (Item 2), Slide Gate (Item 3) and Slide Gate Actuation Arm (Item 6) and Hydraulic Cylinder Assembly from the Mobile Mud Hog®.
- 2) Remove Slide Gate Actuation Arm from Hydraulic Cylinder. Discard all parts except Slide Gate Guard and Hydraulic Cylinder.
- 3) Install new Slide Gate (Item 3), Slide Gate Shims (Item 2), and Slide Gate Covers (Item 1) using the new hardware. Snug bolts but do not tighten.
- 4) Adjust Gate, Shims, and Covers so that the Gate moves smoothly through its entire travel with minimal amount of side play.
- 5) Tighten bolts.
- 6) Install new Slide Gate Actuation Arm (Item 6).
- 7) Install existing Slide Gate Guard (Item 4).

Note: A Needle Valve (Item 5) was originally installed to control the speed the slide gate actuated to allow the operator increased control over concrete placement. Since then it has been determined that most fences do not require speed control on the slide gate. The Needle Valve creates a pressure drop that reduces the opening force on the gate and increases the likelihood of a gate jam. EZ Grout Corporation recommends that the Needle Valve be removed from the system. If speed control is required EZ Grout will supply control valving upon request.

Note: Due to the design of the slide gate rocks sometimes get jammed between the gate and the drum. This can not be avoided. When the gate is jammed often it causes the gate to “bulge” or “mushroom” on the bottom edge. The bulge then drags the gate covers and causes binding. Check the gate periodically for bulges. Grind the gate smooth to fix the problem.