

FH-TSB-002 Fence Hog® Drive Forward Arm Retrofit

Included Parts	
QTY	Description
2	Lower Weld-on Pocket
2	Outriggers
1	Upper Bolt-on Pocket
2	1/2" - 13 x 2" Bolt w/ Washers and Lock Nut
2	3/4" Diameter x 4-1/4" Long Hitch Pin w/ Cotter Pin

Required Tools:

Torch or Plasma Cutter

Welder

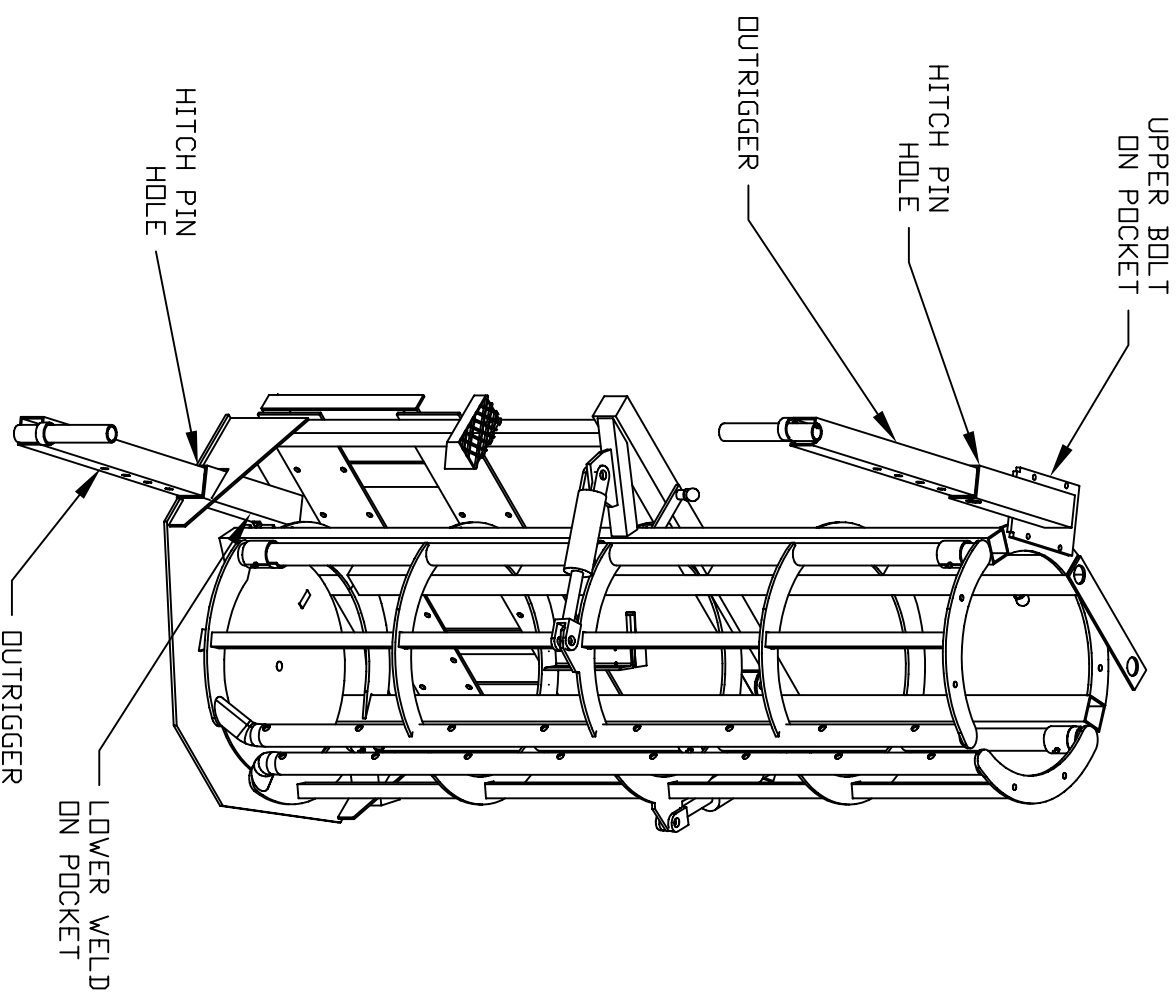
3/4" Combination Wrench

3/4" Sockets with Ratchet Driver

Note: These are universal directions for the 24" and 36" Fence Hog® retrofit. If you have any question as to which model you have, check the 7th and 8th digit of the serial number tag of the Fence Hog®.

Directions:

- 1) Mark and cut the Gusset on the Base Plate as shown in Drawing FH-24-21 for the 24" Fence Hog or FH-36-15 for the 36" Fence Hog®.
- 2) Slide Lower Weld-on Pocket through the hole in the Gusset with the Hitch Pin Hole towards the outside and position as shown in Drawing FH-24-23 for the 24" Fence Hog® or FH-36-22 for the 36" Fence Hog®. Verify that the 3/4" Hitch Pin Will slide through the hole drilled in the Lower Weld-on Pocket.
- 3) Tack weld the Lower Weld-on Pocket to the Base Plate.
- 4) Using the 1/2"-13 x 2" Bolts, bolt the Upper Bolt-on Pocket to the existing holes in the top rung of the Fence Hog. The Upper Bolt-on Pocket can be used on either side.
- 5) Slide the Outriggers into the Pockets and measure the distance between them. Cut a piece of 2" Sch. 80 pipe this length.
- 6) Take both Outriggers out and place the 2" Sch. 80 pipe over the stub shafts. Slide the Outriggers back into the Pockets. Verify that the 3/4" Hitch Pin works in both the Upper and Lower Pockets.
- 7) Remove the Outriggers and weld the Lower Pockets into place.
- 8) Repeat Steps 1 through 7 for the other side.



REV	DATE	DESCRIPTION	DWG CKD

FENCE HOG
 DRIVE FORWARD ARM PARTS LOCATION

EZ-GROUT, CORP,
 5950 S. E. RT. 60
 MCCONNELSVILLE, OH 43756

DWG BY: Scott R. Lang

CHECKED BY:

SHEET NUMBER OF

DWG NO.:

SCALE:

DWG DATE: 08/18/03

CHECK DATE:

REV.

ALL DRAWINGS ARE THE
 PROPERTY OF EZ-GROUT,
 CORP. ANY REPRODUCTION
 WITHOUT WRITTEN CONSENT
 IS PROHIBITED.